

## TRATRA BAR À VIN

Each week we raid our massive multi-award-winning cellar and create an abbreviated list of wines that we'd like you to taste. We're a French restaurant so all our wines are French, many from the world's best benchmark vineyards. If you can't find anything that you particularly like, just ask and we've got about 600 other wines to choose from.

12.5% discretionary service charge will be added to the bill. Please notify your waiter if you have any special dietary requirements.

follow: @tratalondon  
boundary.london/tratra

## FIZZ

Crémant de Loire, Château de l'Aulée NV **£8** GLS

Veuve Clicquot Yellow Label Brut NV **£9.5** GLS  
Rose **£12** GLS

Besserat de Bellefon Cuvée des Moines 2002 **£95**

Larmardier-Bernier 1er Cru, Longitude, Blanc de Blancs NV **£110**

Billecart-Salmon Rosé NV **£50** HALF BTL

## HOUSE WINES BY THE GLASS

**WHITE**  
Muscadet Sur Lie, Château de Templiers, Loire, 2013 **£5**

Frangy, Roussette de Savoie, Domaine Bruno Lupin, 2014 **£6.5**

Pacherenc du Vic Bilh Sec, Follié de Roi, South West, 2014 **£7.5**

Savennières, Clos de Coulaïne, Château Pierre Bise, Loire Valley, 2014 **£9.75**

**RED**  
Côtes du Rhône, La Reserve du Prince, 2014 **£5.5**

Lard-des-Choix, Champs Libre, Ardeche, 2015 **£7**

Madiran, Château Barrejat, 2014 **£7.5**

Château Vignelaure, Côtes de Provence, 2008 **£10.5**

## PREDILECTION OF THE WEEK

**WHITE**  
**BURGUNDY**  
Mâcon-Burgy, Les 3 Terroir, Domaine Fichet, 2015, **£8** GLS | **£43** BTL

Bourgogne, Domaine Leflaive, 2011 **£80**

Nuits-Saint-Georges, Le Perrière, Henry Gouges, 2009 **£170**



## ROSÉ & LIGHTLY CHILLED RED

**ROSÉ**  
Les Agasses, Château Val Joanis, Rosé, 2014 **£6.75** GLS | **£35** BTL

Château Léoube, Côtes de Provence, Rosé, 2015 **£8** GLS / **£42** BTL

Château D'Esclan, Whispering Angel, Rosé, 2015 **£75** BTL

**RED**  
Morgon, Côtes du Py, Domaine la Chaponne, 2014 **£7.5** GLS / **£42** BTL

Saumur Champigny, Langlois-Château, 2011 **£48** BTL

## NATURAL & BIODYNAMIC

**WHITE**  
Mas de Daumas Gassac, Languedoc, 2014 **£75**

Menetou Salon, Domaine Pellé, Loire Valley, 2014 **£55**

**RED**  
Lirac, Le Classicque, Domaine du Joncier, 2013 **£48**

Corbières, Reserve Grand Arc, Languedoc, 2014 **£35**

## SWEET & LUSCIOUS

Monbazillac, Domaine de l'Ancienne Cure, South West, 2011 **£6.5** 75ML GLS / **£29** HALF BTL

Rivesaltes Ambre, Domaine Cazes, Rhône Valley, 1997 **£11** 75ML GLS / **£39** HALF BTL

Château Rieussec, 1er Grand Cru Classé, Sauternes, 2007 **£85** HALF BTL



## GUTSY & ROBUST REDS

Carignan, Vieilles Vignes, Boulevard Napoléon, Languedoc, 2011 **£8** GLS / **£55** BTL

Châteauneuf du Pape, Domaine Gradassi, Rhône Valley, 2014 **£65**

## THE ARDECHE

**WHITE**  
Lard-des-Choix, Champs Libre, 2015 **£7** GLS | **£39** BTL

**RED**  
La Souteronne, Hervé Souhaut, IGP Ardeche, 2015 **£55** BTL

PLEASE TURN  
OVER FOR  
MORE WINES

## ICONS & BLOCK-BUSTERS

### WHITE

Blanc de Fumé, Silex, Dagueneau, 2009 **£210**

### RED

Châteauneuf du Pape, Vieux Télégraphe, 2005 **£230**

Hermitage, J-L Chave, 1988 **£475**



## LOW MARGINS ON TOP WINES

### WHITE

Corton-Charlemagne, Lequin-Colin, Burgundy, 2011 **£125**

### RED

Château Palmer, Margaux, 1985 **£225**

### FIZZ

Armand de Brignac, Ace of Spades, Brut NV **£250**

## TASTERS – CORAVIN 75ML

### WHITE

Condrieu, M & Y Gangloff, 2010 **£18 GLS**

### RED

Château Pontet Canet, Pauillac, Bordeaux, 2010 **£32 GLS**

## OLD & ECLECTIC

### WHITE

Domaine le Fay d'Homme, Muscadet, 1991 **£73**

Domaine Weinbach, Clos des Capucins Tardive, 1988 **£160**

### RED

Domaine Tempier, 1981 **£240**

Château Montrose, 1953 **£950**

## LARGE FORMATS

### WHITE

Riesling, Cuvée Frederic Emile, FE Trimbach, 2005 **£205 Magnum**

Narvaux, Ballot-Millot, Meursault, 2010 **£235 Magnum**

### RED

Châteaux Vieux Sarpe, St Emilion, Grand Cru, 2008 **£175 Magnum**

Domaine Léon Barral "Jadis" Faugères, 2012 **£129 Magnum**

Château de Pibarnon, Bandol, 2012 **£375 Jeroboam**

Beaune, Clos du Roi, Nicolas Potel, 2005 **£390 Jeroboam**

## DIGESTIFS ALL 50ML

### EAUX DE VIE

La Vieille Prune, Louis Roque **£9.5**  
Distillerie Jos Nusbaumer, all **£9**: Marc d'Alsace; Poire Williams; Mirabelle; Cumin; Vieux Kirsch; Esprit d'Biere; Framboise

### CALVADOS

Morin Selection 3 year old **£8**  
Hors d'Age, 15 year old **£15**  
Napoleon, 25 year old **£19**

### COGNAC

Cognac Couprie Napoleon 12 year old **£25**

### ARMAGNAC

Château de Lacquy VSOP **£13**  
Château de Gaube, Selection Darroze 1966 **£45**  
1972 **£30**

### PORT

Quinta do Noval, Tawny Port Colheita, 2000 **£14**

## COCKTAILS ALL £12

Dry Martini  
Negroni  
Old Fashioned  
Sazerac  
Bloody Mary  
Corpse Reviver  
French 75

### NON-ALCOHOLIC ALL £6.5

Elderflower Cooler  
Shirley Temple  
Virgin Mary



## OTHER DRINKS

### APÉRITIFS

Pastis **£7**  
Communard **£8**  
Pineau des Charente **£8**  
Lillet Blanc **£7**

### CIDER & BEER ALL 330ML

Cidre de Breton **£4.75**  
Meteor Lager **£4.5**

### SOFT DRINKS

Evian / Badoit **£3.75**  
Mixers / Tonics **£4**

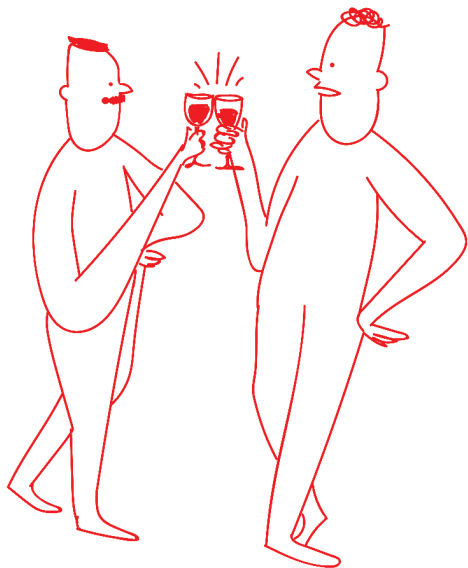
## OPENING HOURS

MONDAY TO WEDNESDAY  
6PM TO 11.30PM

THURSDAY TO SATURDAY  
6PM TO 01.00AM  
LATE BAR

SUNDAY  
MIDDAY TO 6PM

# A LITTLE WINE RELATED FUN



## MYSTERY WINE £8 PER GLASS

If you guess the appellation, we'll give you a bottle – always worth more than £50



## WINE FLIGHT OF THE WEEK

Three 75ml wines £20  
Ask for details on this week's theme.



## THE BLACK GLASS TEST £7 PER GLASS

Is it white, red or rosé? Guess the wine without the benefit of seeing the colour. If you guess the grape variety the second glass is on us.



## WINE TASTINGS & EVENTS

### Wine Tastings and Events

We regularly host a wide-range of wine tastings and wine-orientated events, for further information or to arrange a special event of your own, please email [tratra@boundary.london](mailto:tratra@boundary.london)



## CORKAGE

We always prefer that you buy wine from us but do also recognise that wine lovers, or those from the trade, sometimes want to share their own personal bottles amongst friends. In these situations, we offer a fixed rate of **£12.5** per bottle – we simply ask that you also buy at least one bottle from our list.



## WINE QUIZ – NO GOOGLING

Name the exact year in the 19th Century when the famous classification of Bordeaux wines happened?

---

---

---

Which celebrity couple produced an award-winning rosé wine?

---

---

---

Which (pop?) group sang about Champagne Supernova?

---

---

---

What is Novinophobia?

---

---

---

## WINES TO TAKE HOME

Subject to availability, you can purchase our wines at 25% off the list price.

